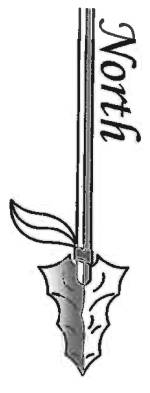
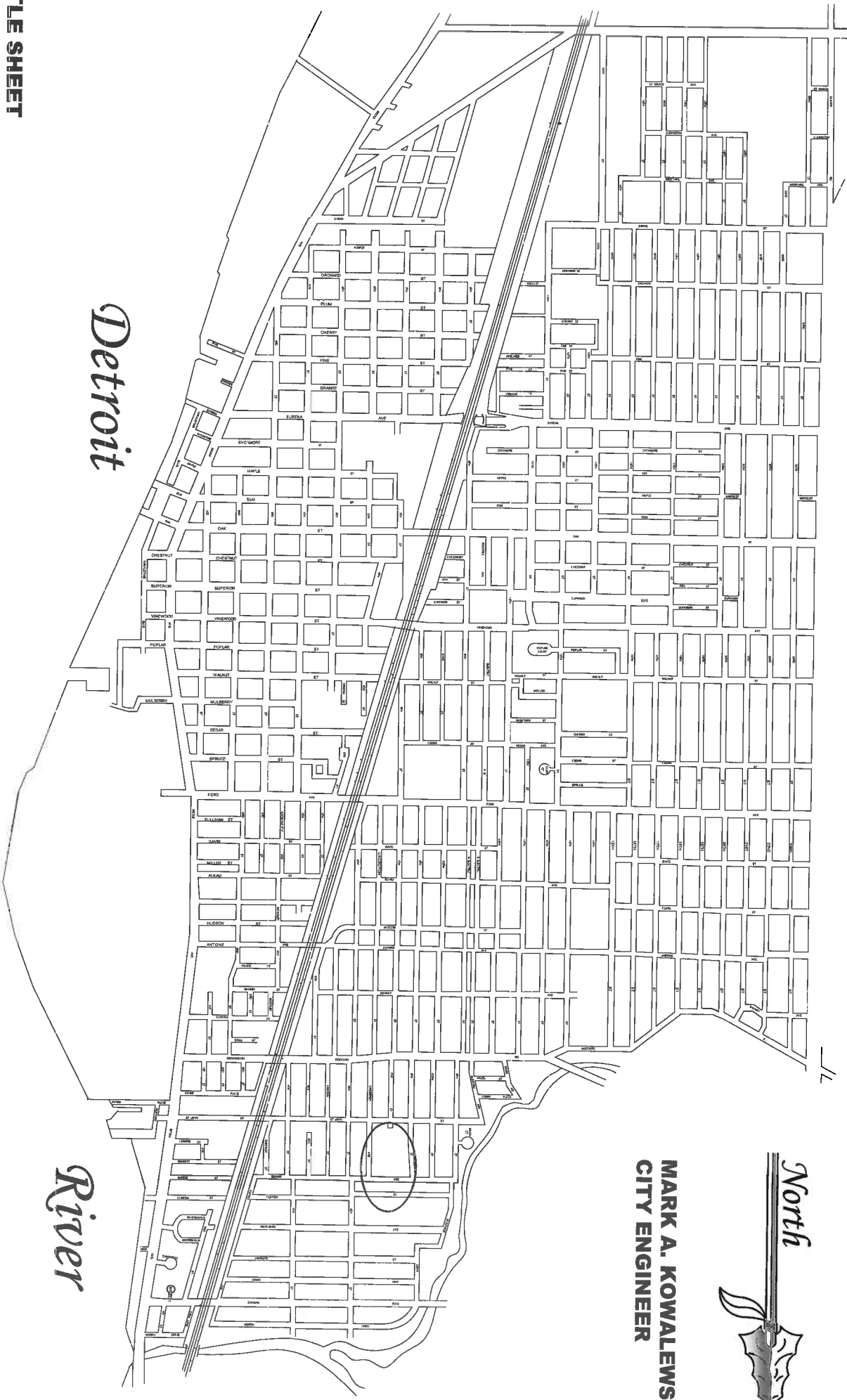


PICKLE BALL COURT



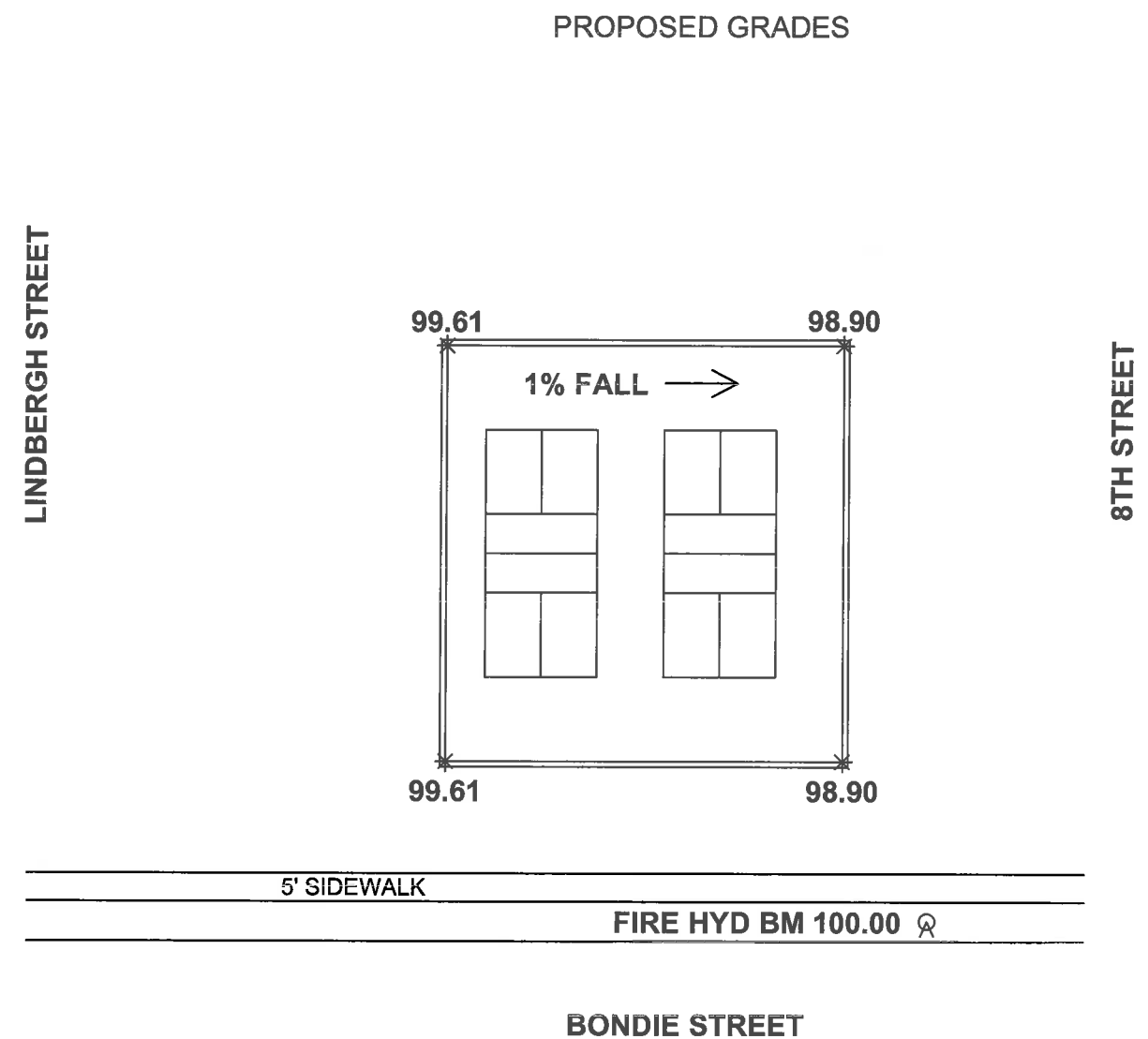
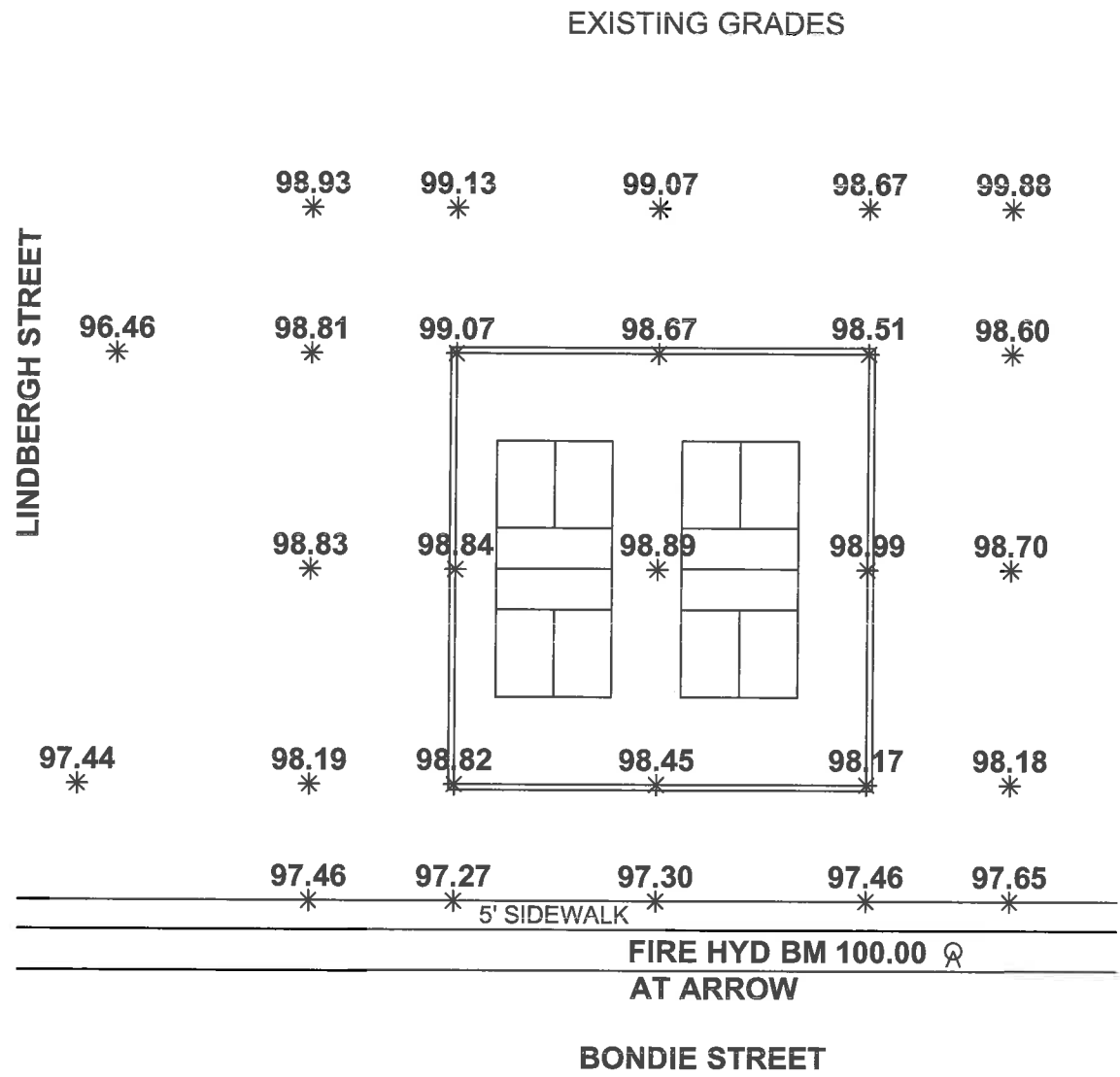
MARK A. KOWALEWSKI
CITY ENGINEER

- T-1 TITLE SHEET
- R-1 F.O.P. PARK PICKLE BALL COURT - EXISTING / PROPOSED GRADES
- R-2 F.O.P. PARK PICKLE BALL COURT - PROPOSED LAYOUT
- D-1 DETAILS
- D-2 DETAILS
- D-3 DETAILS
- D-4 DETAILS

TITLE SHEET
F.O.P. PARK PICKLE BALL COURT - EXISTING / PROPOSED GRADES
F.O.P. PARK PICKLE BALL COURT - PROPOSED LAYOUT
DETAILS
DETAILS
DETAILS
DETAILS

PROPOSED LOCATIONS MARKED WITH 

T-1	CITY OF WYANDOTTE - DEPT. OF ENGINEERING CITY ENGINEER - MARK A. KOWALEWSKI 3200 BIDDLE AVENUE WYANDOTTE, MI 48192 PHONE: (734) 324-4551 FAX: (734) 324-4535	2017 F.O.P. PARK PICKLE BALL COURT	DATE: 8/15/17 DRWN BY: JOE MAYHEW CK BY: JESUS PLASENCIA PROJECT NO: 4710	REVISIONS:
------------	--	---	--	------------



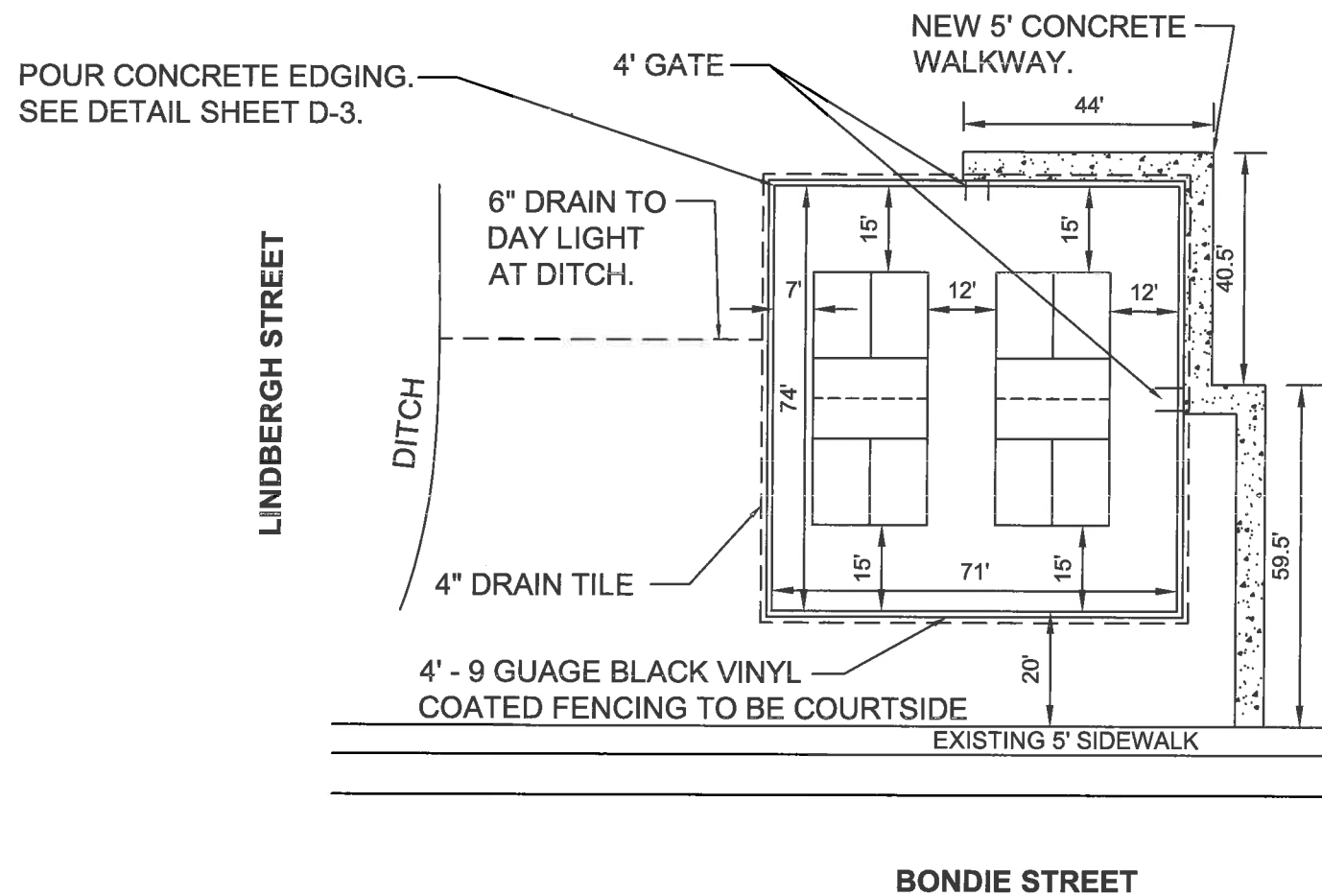
F.O.P. PARK - PICKLE BALL COURT

1" = 30' - 0"



3 WORKING DAYS | BEFORE YOU DIG | CALL MISS DIG | 1-800-482-7171 |
(TOLL FREE) FOR THE LOCATION OF UNDERGROUND FACILITIES

<p>2017 F.O.P. PARK PICKLE BALL COURT</p>	<p>REVISIONS:</p> <p>DATE: 8/15/17 DRAWN BY: JOE MAYHEW CK BY: JESUS PLASENCIA PROJECT NO: 4710</p>
<p>CITY OF WYANDOTTE - DEPT. OF ENGINEERING CITY ENGINEER - MARK A. KOWALEWSKI 3200 BIDDLE AVENUE WYANDOTTE, MI 48192 PHONE: (734) 324-4551 FAX: (734) 324-4555</p>	
<p>R-1</p>	

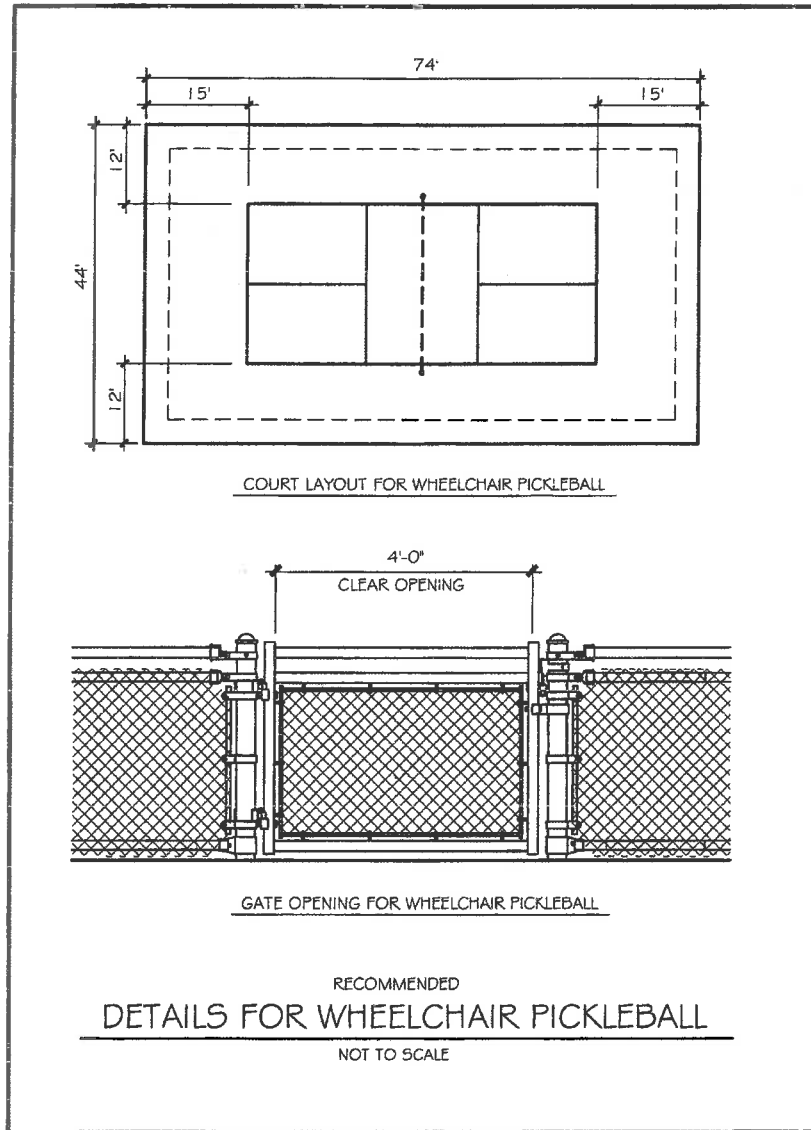


NOTES:
 PROPOSED COURT SPECIFICATIONS ARE FOUND ON
 ATTACHED DETAIL SHEETS.
 BLACK TOPSOIL TO BE BROUGHT IN. HYDROSEED TO
 BE PLACED AFTER GRADING IS COMPLETE.

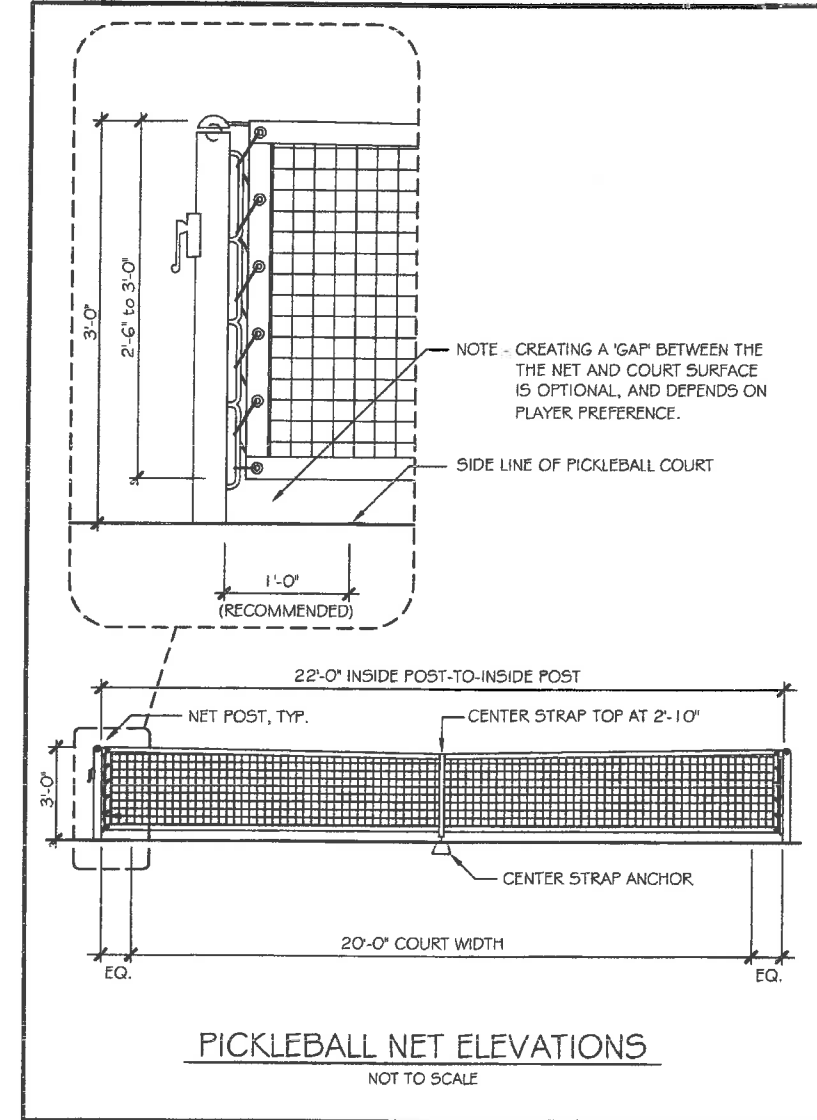
F.O.P. PARK - PICKLE BALL COURT
 1" = 30' - 0"
 NORTH



R-2	2017 F.O.P. PARK PICKLE BALL COURT	REVISIONS: DATE: 8/14/17 DRAWN BY: JOE MAYHEW CK BY: JESUS PLASENCIA PROJECT NO: 4710
CITY OF WYANDOTTE - DEPT. OF ENGINEERING CITY ENGINEER - MARK A. KOWALEWSKI PHONE: (734) 324-1551 FAX: (734) 324-4535 3200 BIDDLE AVENUE WYANDOTTE, MI 48182		



28OVERRUN.ADA.AVL.16



02NETELEV.AVL.16

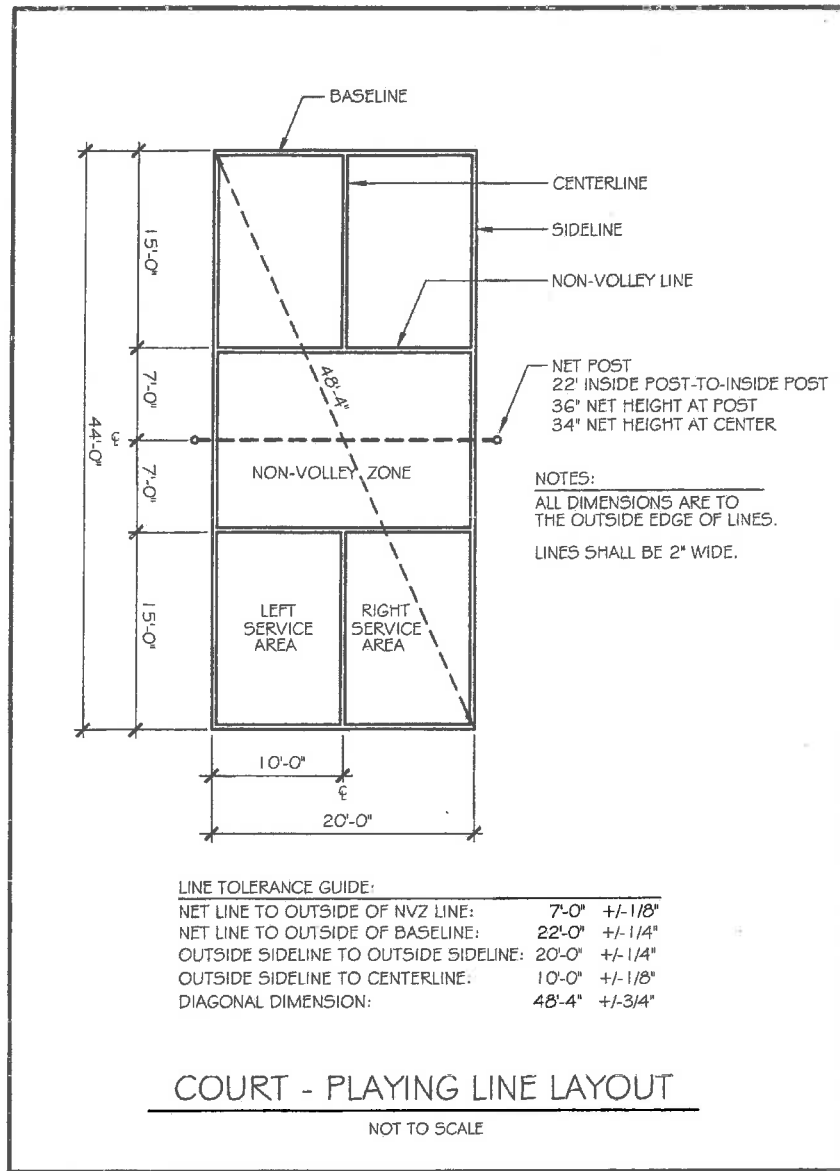
2017 F.O.P. PARK PICKLE BALL COURT

CITY OF WYANDOTTE - DEPT. OF ENGINEERING
 CITY ENGINEER - MARK A. KOWALEWSKI
 3200 BIDDLE AVENUE
 WYANDOTTE, MI 48192
 PHONE: (734) 324-4551
 FAX: (734) 324-4535

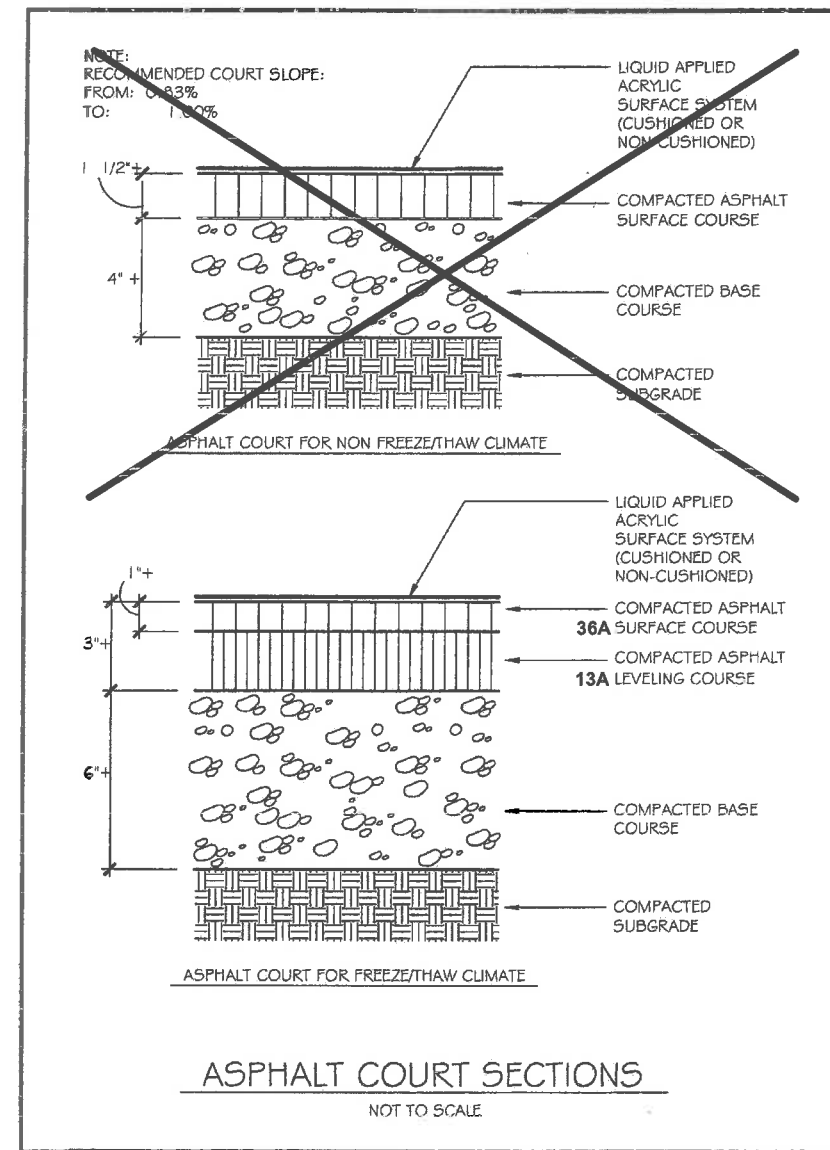
DATE: 8/15/17
 DRAWN BY: JOE MAYHEW
 CHECKED BY: JESUS PLASENCIA
 PROJECT NO: 4710

REVISIONS:

D-1



01PLINES.AVL.16

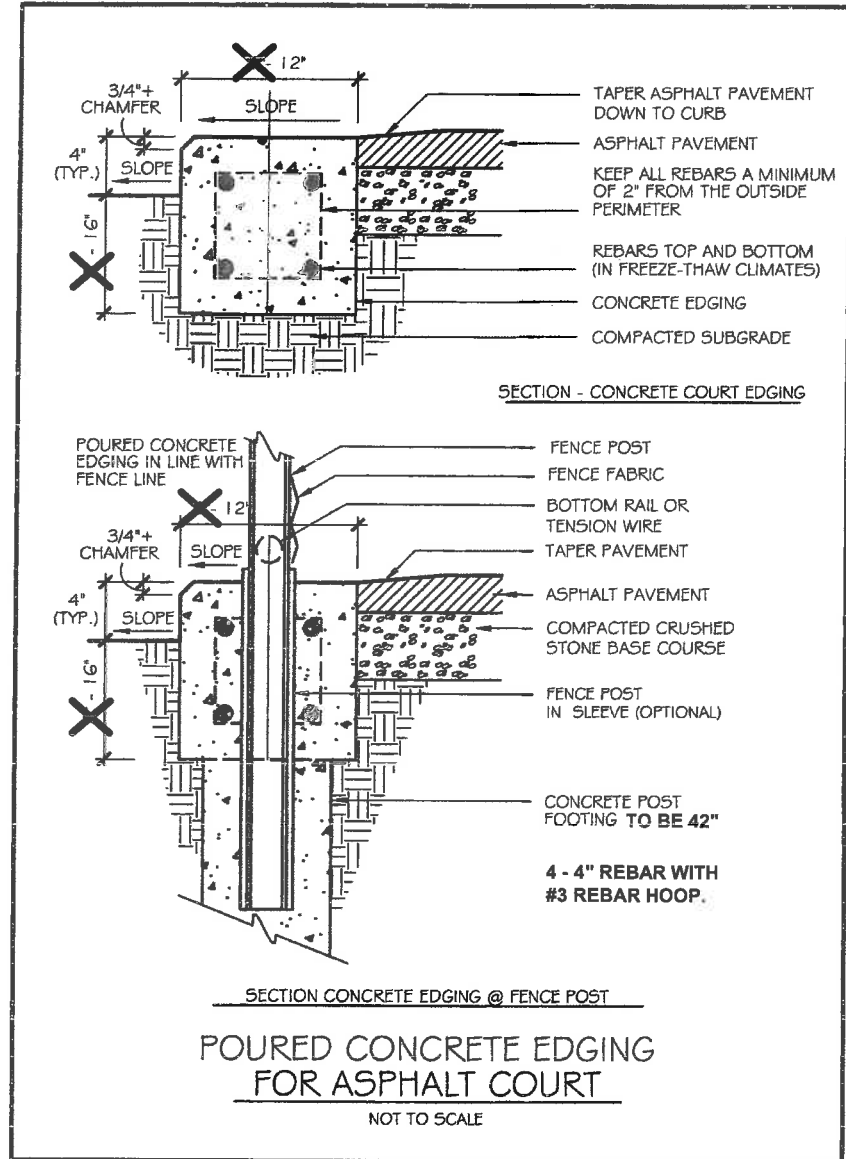


14ASPH.AVL.16

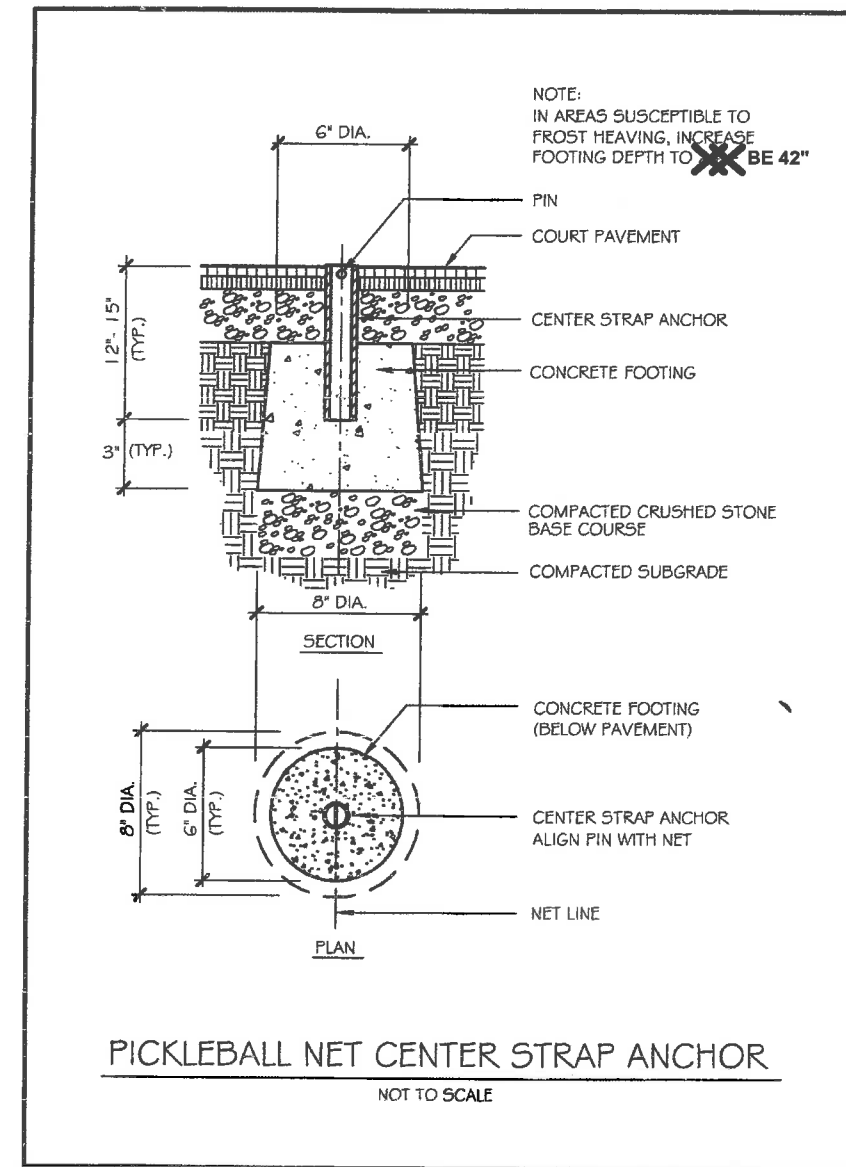
REVISIONS:
DATE: 8/15/17
BY: JOE MAYHEW
CHK BY: JESUS PLASENCIA
PROJECT NO: 4710

2017
F.O.P. PARK
PICKLE BALL COURT

CITY OF WYANDOTTE - DEPT. OF ENGINEERING
CITY ENGINEER - MARK A. KOWALEWSKI
3200 BIDDLE AVENUE
WYANDOTTE, MI 48192
PHONE: (734) 324-4551
FAX: (734) 324-4535



19EDGE3.AVL.16



15CSTRAP.AVL.16

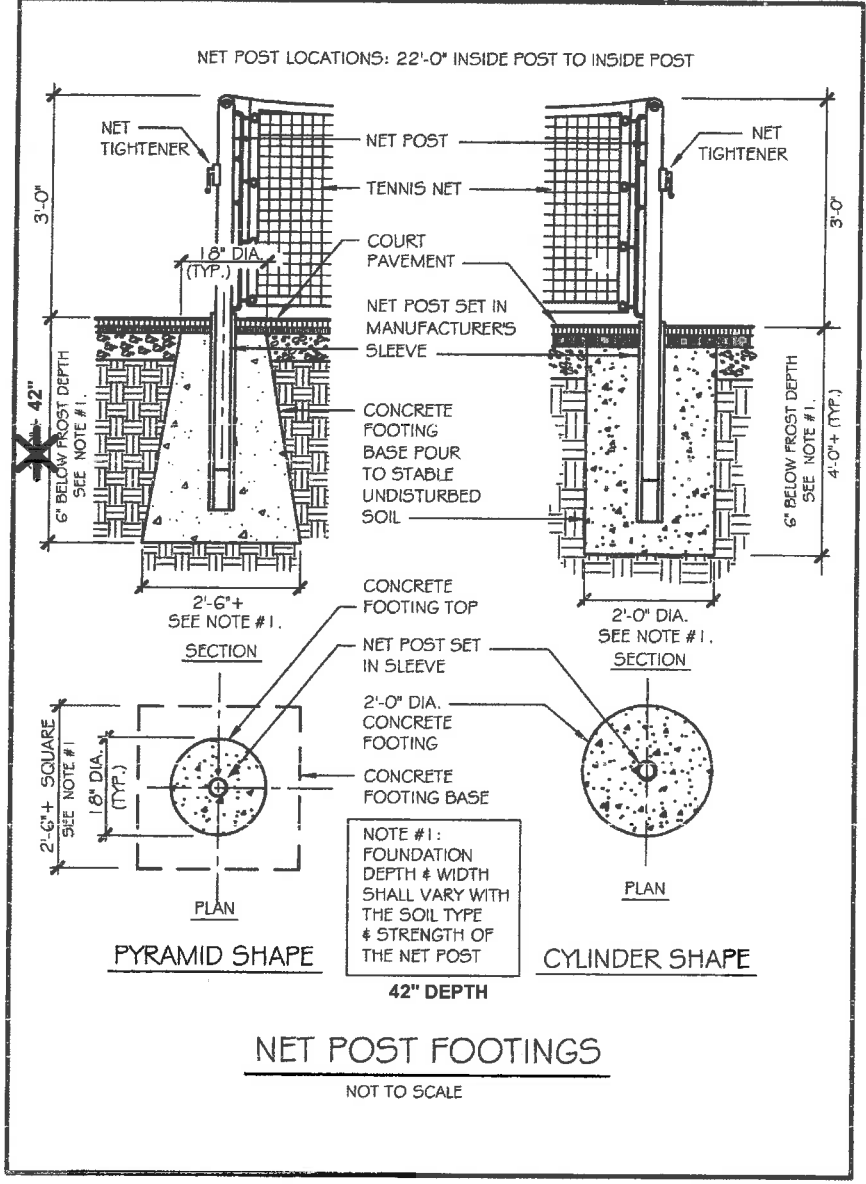
REVISIONS:

DATE: 8/15/17
 DRAWN BY: JOE MAYHEW
 CHECK BY: JESUS PLASENCIA
 PROJECT NO: 4710

2017
 F.O.P. PARK
 PICKLE BALL COURT

CITY OF WYANDOTTE - DEPT. OF ENGINEERING
 CITY ENGINEER - MARK A. KOWALEWSKI
 3200 BIDDLE AVENUE
 WYANDOTTE, MI 48192
 PHONE: (734) 324-4551
 FAX: (734) 324-4535

D-3



09NPOSTS.AVL.16

REVISIONS:
DATE: 8/15/17
DRAWN BY: JOE MAYHEW
CHK BY: JESUS PLASENCIA
PROJECT NO: 4710

2017
F.O.P. PARK
PICKLE BALL COURT

CITY OF WYANDOTTE - DEPT. OF ENGINEERING
CITY ENGINEER - MARK A. KOWALEWSKI
3200 BIDDLE AVENUE
WYANDOTTE, MI 48192
PHONE: (734) 324-4551
FAX: (734) 324-4535

D-4